

TYPE 1 DIABETES: WHAT TO DO WHEN YOU ARE ILL



► WHY IS THIS LEAFLET FOR YOU?

Everyone has days when they are not well. If you have diabetes, being unwell can affect your glucose control so it is important that you know how to manage this. This leaflet will give you essential information on:

- How illness affects your glucose levels
- Looking after yourself
- Managing your insulin
- What to eat and drink
- Being prepared
- When to seek help



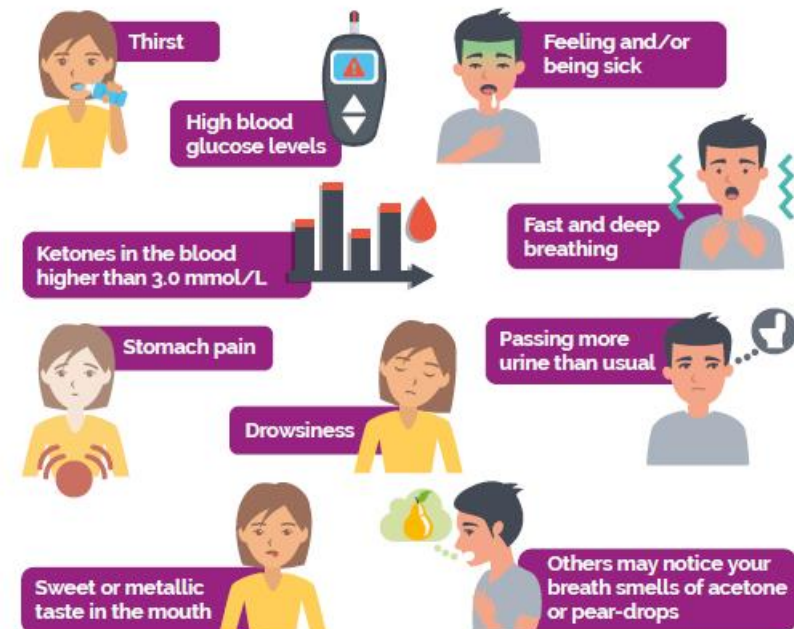
The content of this leaflet was generated independently by TREND-UK. Printing and distribution was funded by Novo Nordisk

Date of preparation: March 2020

► HOW DOES ILLNESS AFFECT YOUR GLUCOSE LEVELS?

When you are ill, especially if you have an infection and high temperature, your body is less responsive to the insulin you inject. Insulin is a hormone which controls your glucose level. Being unwell therefore usually makes your glucose levels rise, even if you are eating less than usual.

You can also produce ketones when you are unwell. These are produced when the body is unable to use glucose for energy.



It is possible to manage your diabetes effectively during illness, keep your glucose levels in or near to target, and prevent the development of ketones by following the simple advice given in this leaflet.

> LOOKING AFTER YOURSELF

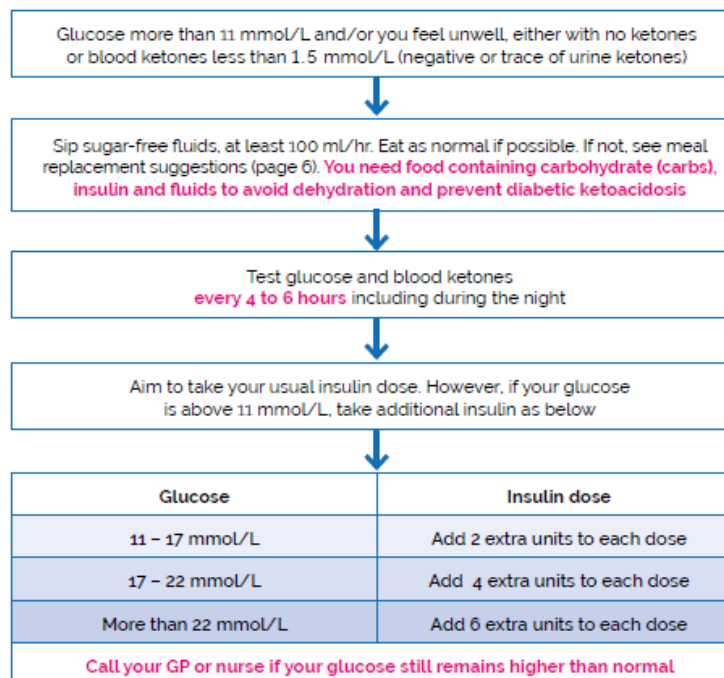
- ✓ **Rest:** avoid strenuous exercise
- ✓ **Prevent dehydration** by drinking plenty of sugar-free fluids. Sip gently throughout the day (at least 2 ½ to 3 ½ litres or 4 to 6 pints in 24 hours)
- ✓ **Treat symptoms** such as a high temperature or a cough with basic over-the-counter medicines such as painkillers and cough syrups. These do not have to be sugar-free varieties as they contain very little glucose and are taken in small quantities. Ask your pharmacist for advice
- ✓ **Contact your GP** if you think you have an infection as you may need antibiotics
- ✓ **Monitor** your glucose levels by your usual method e.g. capillary glucose or continual interstitial glucose monitoring while you feel unwell. Test your blood/urine for ketones
- ✓ **Understanding your blood ketone levels:**
 - Less than 0.6 mmol/L is normal
 - 0.6 to 1.5 mmol/L means you may be at risk of developing DKA so test again after 2 hours
 - 1.6 to 2.9 mmol/L means you are at risk of DKA and should contact your diabetes team or GP as soon as possible
 - 3 mmol/L or higher means you have a very high risk of DKA and should get emergency help as soon as possible

If you are only able to do a urine ketone test, a result of 2+ means you may be at risk of developing DKA.

You may need to adjust your insulin dose while you are ill, especially if your glucose level is high and you develop ketones.

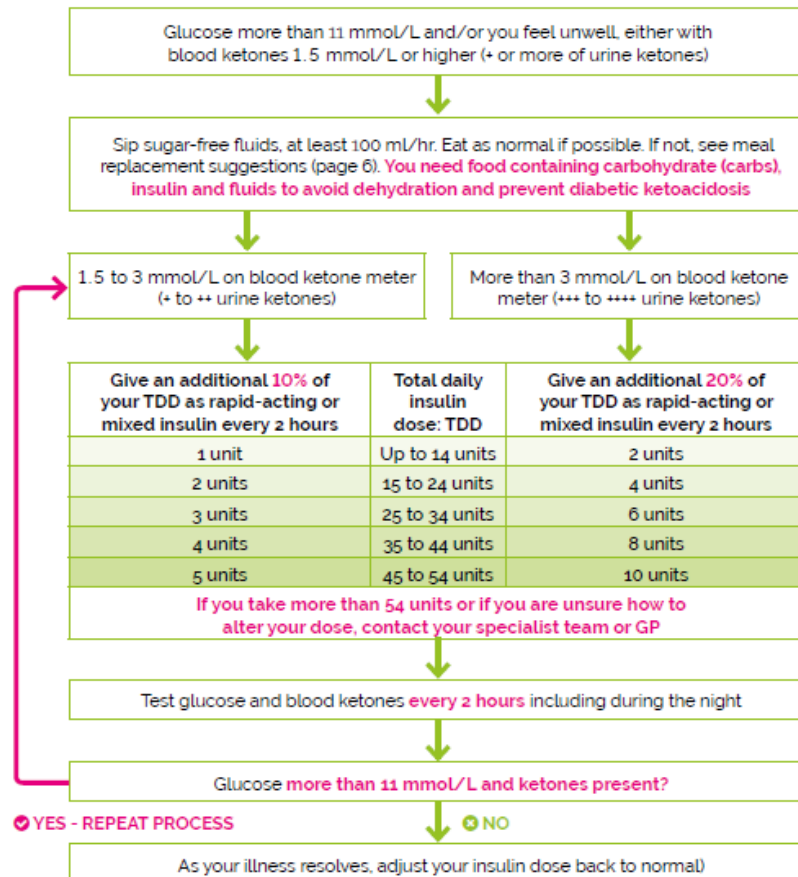
Seek urgent medical help if your readings remain higher than usual, or you feel very unwell and you are not sure what to do.

> MANAGING YOUR INSULIN DOSE WHEN YOUR BLOOD KETONES ARE LESS THAN 1.5 MMOL/L



⚠ If you start vomiting, are unable to keep fluids down, or are unable to control your glucose or ketone levels, you must seek urgent medical advice. DON'T STOP TAKING YOUR INSULIN EVEN IF YOU ARE UNABLE TO EAT

MANAGING YOUR INSULIN DOSE WHEN YOUR BLOOD KETONES ARE 1.5 MMOL/L OR HIGHER









⚠ If you start vomiting, are unable to keep fluids down, or are unable to control your glucose or ketone levels, you must seek urgent medical advice. **DON'T STOP TAKING YOUR INSULIN EVEN IF YOU ARE UNABLE TO EAT**

WHAT CAN YOU EAT AND DRINK?

Your body uses a lot of energy when you are unwell, even if you are resting. Try to eat as normal but if you cannot manage your usual meals, replace these with light and easily digested foods such as soups and milky puddings. See the table below for a list of alternative food options. **Each portion is equal to approximately 10 gram carbohydrate** (e.g. an egg-size potato, a small slice of bread or a tablespoon of cooked rice or pasta):



	Fruit juice 100 ml
	Milk 200 ml
	Plain vanilla ice-cream 1 large scoop
	Tomato soup 200 gram (half a large tin)
	Low fat yoghurt 150 gram (1 small pot)
	2 Rich tea or malted milk biscuits

> WHEN TO SEEK HELP

Get to hospital urgently if any of these apply to you:

- ⚠ If you are pregnant and have ketones
- ⚠ If you vomit for the duration of 2 meals (i.e. 4 hours) and are unable to keep fluids down
- ⚠ If you have persistent ketones despite increasing your insulin
- ⚠ If you become drowsy and/or breathless
- ⚠ If you have acute abdominal pain
- ⚠ If your condition worsens despite following the advice given in this leaflet

If you need to go to hospital, remember to take a list of all your medications and insulin safety card with you

⚠ Even if you are not eating, never stop your insulin



> BEING PREPARED:

- 1 Make sure you always have plenty of insulin and glucose and ketone monitoring equipment available
- 1 Make sure your ketone strips are still in date if you have not used them for a while
- 1 Keep a few simple medicines such as painkillers and cough syrup in a safe place in the house
- 1 Discuss how to manage your diabetes when you are unwell with your doctor or nurse so you know what to do if you become ill and know when to seek help



> USEFUL RESOURCES:

TREND-UK website: www.trend-uk.org
Diabetes UK: www.diabetes.org.uk
Diabetes UK: ☎ 0345 123 2399



™ TREND-UK Limited. Content to be reviewed March 2022